



The Coach House, Compton Verney, CV35 9HJ

**SHELDON
BOSLEY
KNIGHT**

LAND AND
PROPERTY
PROFESSIONALS

Property Description

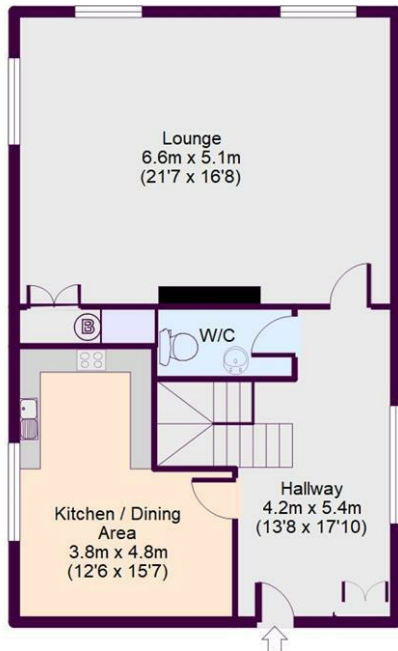
*** AVAILABLE NOW *** A unique opportunity to reside within a converted Coach House in the grounds of the 18th Century country mansion, Compton Verney, now an award winning Art Gallery. Accommodation includes a beautiful kitchen dining room, equipped with integrated appliances, sash windows and wooden floors, a grand reception room with the original marble fireplace and French doors leading out to a delightful courtyard garden. On the first floor the Principle bedroom has an accompanying dressing room and en-suite bathroom, fully in keeping with the style of the property. The second bedroom also benefits from an en-suite bathroom. On the second floor there is a generously proportioned third bedroom with exposed timber beams adding character and warmth. There is a smaller forth bedroom and a contemporary shower room completing the accommodation on this floor. Externally there is a single garage and 2 allocated parking spaces. Residents will enjoy the benefit of the spectacular 'Capability' Brown, landscaped grounds along with any external exhibitions. Council Tax Band D. Energy Rating D.



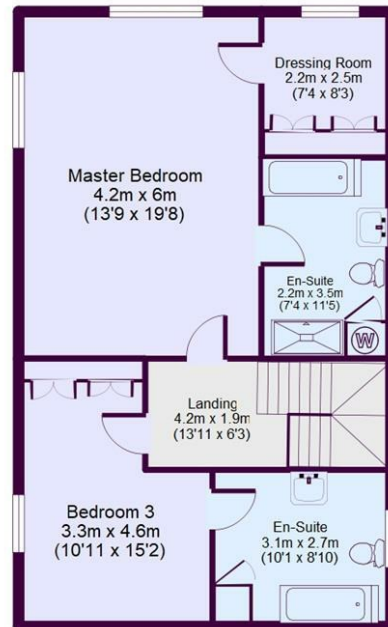


The Coach House, Compton Verney, Warwick, CV35 9HJ

Ground Floor



First Floor



Top Floor

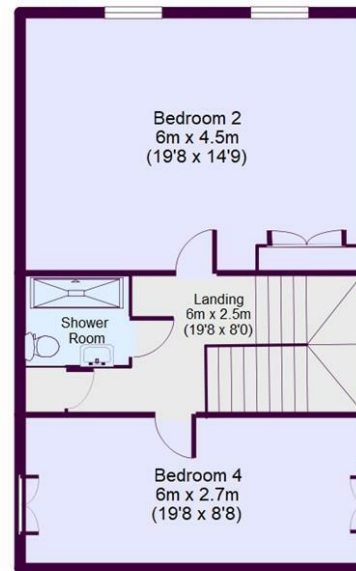


Illustration purpose only

APPROX GROSS INTERNAL FLOOR AREA: 196 sq. m / 2106 sq. ft

Key Features

- *** AVAILABLE NOW ***
- Compton Verney
- 4 Bedrooms
- 3 Storey Townhouse
- Unfurnished
- Courtyard Garden
- Garage & Parking
- Council Tax Band D
- Energy Rating D
- Situated within 'Capability' Brown landscaped grounds

£2,250 PCM